



**HOW DO I CONTACT THE BUTTERFLY TEAM
FOR PEDIATRIC CARE?**

Call 713-468-2441

Fax 281-469-3353



HOUSTON HOSPICE
Life Matters

1905 Holcombe Boulevard

Houston, Texas 77030

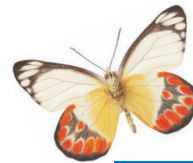
Phone: 713-HOSPICE (713-467-7423)

www.houstonhospice.org

Member of the Texas Medical Center

Houston Hospice, a 501(c)(3) organization, is a community-based, community-supported, not-for-profit. In this spirit, Houston Hospice is dedicated to providing uncompromised, compassionate, end-of-life care to each patient, family and loved one, irrespective of ethnicity or beliefs.

*M*EASURE NOT
THE LENGTH OF THEIR DAYS
BUT THE GRACE OF
THEIR FLIGHT



THE
Butterfly Program



HOUSTON HOSPICE
Life Matters

WHAT IS THE BUTTERFLY PROGRAM?

The Butterfly Program provides palliative comfort care for children with life-limiting conditions who are aged 18 and younger.

The program advocates for the needs of the infant, child or adolescent and supports the child's family. Also included are perinatal services of education, advocacy, care coordination and emotional support for couples whose unborn child has been diagnosed with a terminal condition.

The Butterfly Team includes physicians, nurses, social workers, chaplains, nurses aides and trained volunteers.



WHAT OTHER SERVICES ARE INCLUDED IN THE BUTTERFLY PROGRAM?

The Butterfly Team makes arrangements for all necessary medical equipment, supplies and medications.

Care of the child is provided at the home or, if needed, at the Margaret Cullen Marshall Hospice Care Center located in the Texas Medical Center. Also, 24-hour, on-call availability of a nurse, chaplain or social worker is provided, and members of the team give support and instructions in caregiving and help family members care for their loved one. Our specialized services focus on comfort care, pain relief and symptom management for the infant, child or adolescent.



WHO PAYS FOR PEDIATRIC CARE PROVIDED BY THE BUTTERFLY TEAM?

Reimbursement is funded by Medicaid and private insurance. Private pay is also accepted.



WHO CAN MAKE A REFERRAL?

Anyone can make a referral by calling the Admissions Office at 713-468-2441. Referrals require approval by the child's physician.



WHAT AREAS ARE SERVED BY THE BUTTERFLY TEAM?

All or parts of 10 counties are served, and include Austin, Brazoria, Colorado, Fort Bend, Harris, Jackson, Matagorda, Montgomery, Waller and Wharton.

IS ONGOING SUPPORT AVAILABLE FOR THE BEREAVED FAMILY MEMBERS?

We offer a variety of bereavement support services that are open to the community at no charge. Our ongoing groups are open format and provide support during the grieving process. Grief is a natural part of healing. We invite you to come share, listen and be with others who understand.

